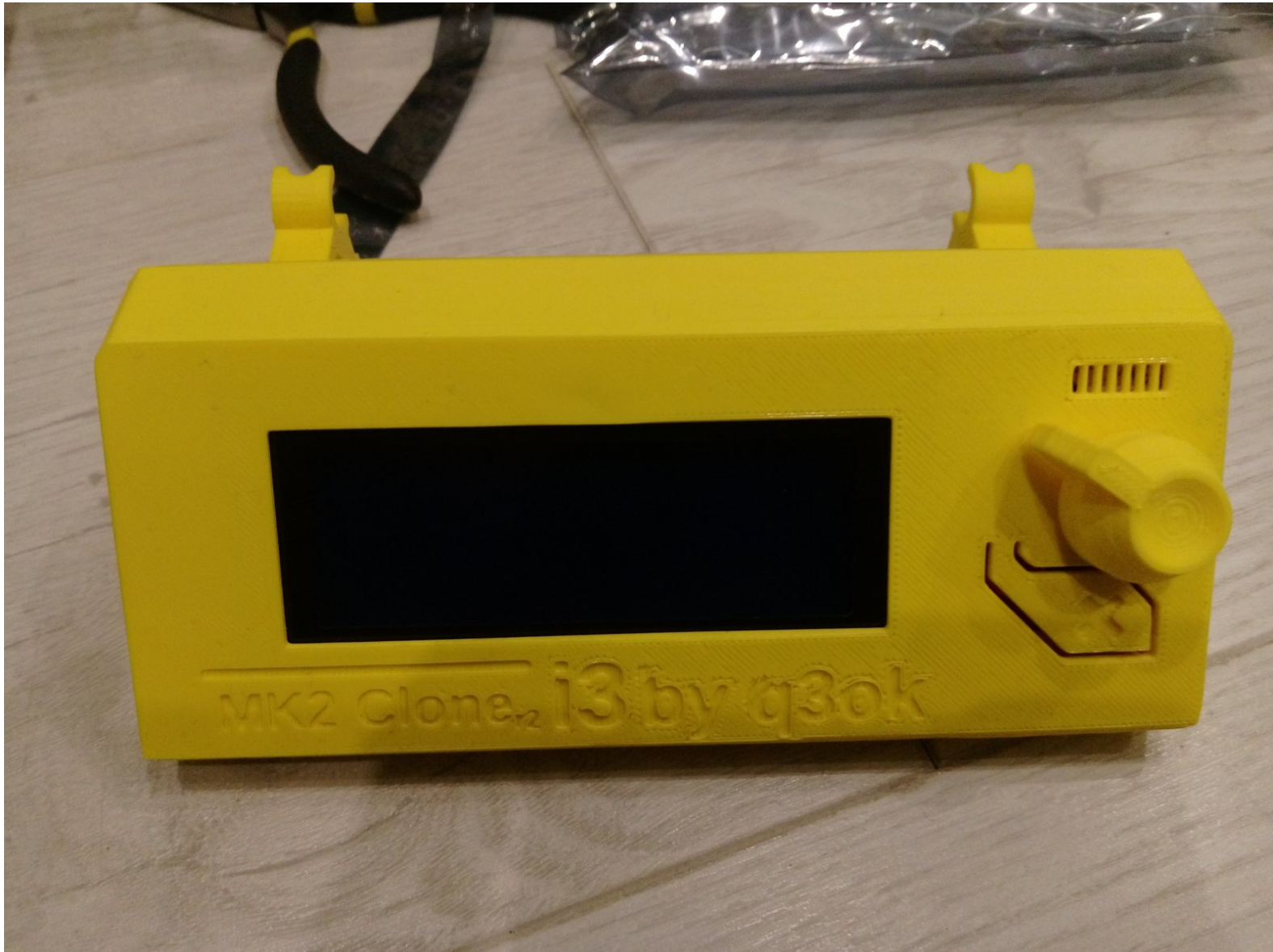


MK2Clone

5. LCD Assembly

Written By: q3ok

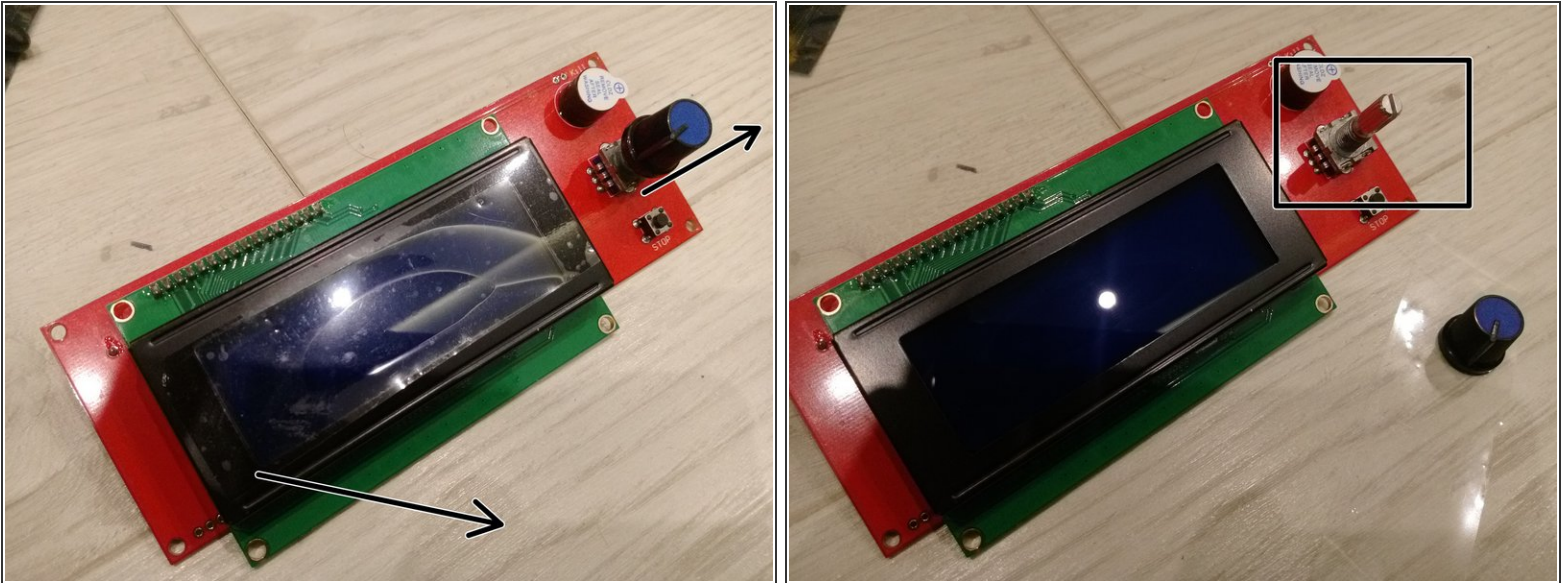


Step 1 — Printed parts needed



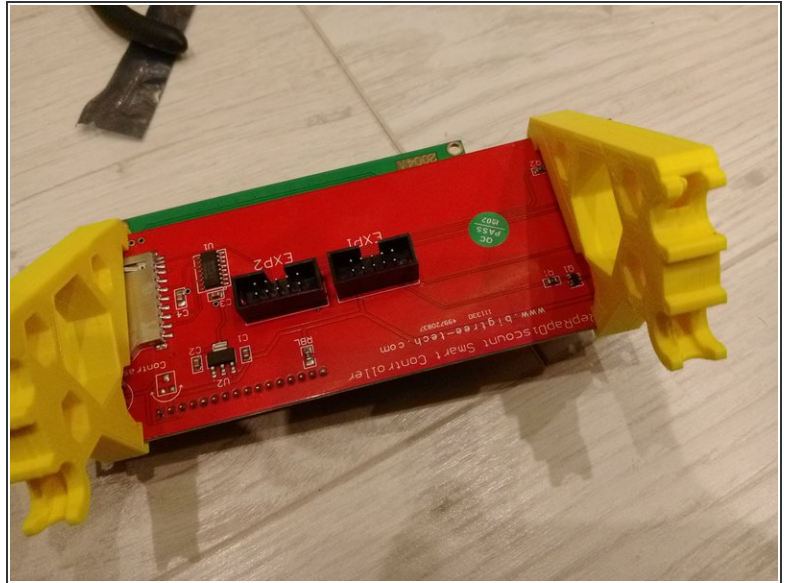
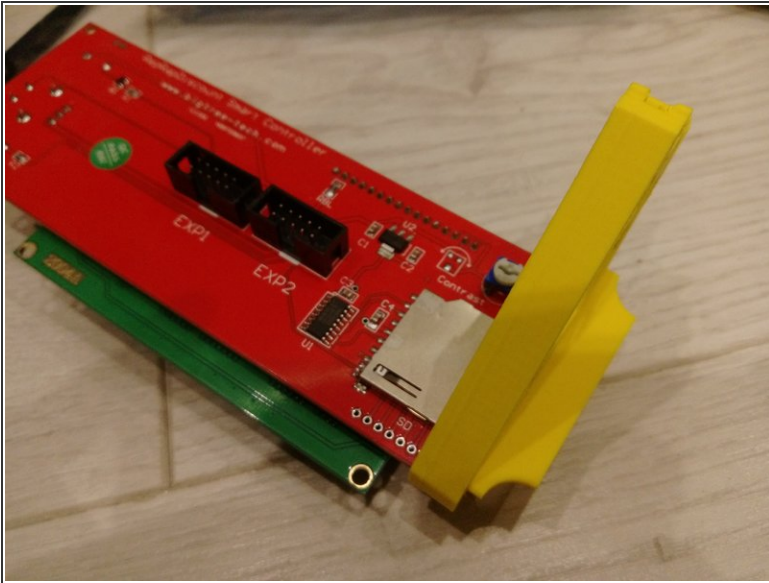
- lcd-support-A
- lcd-support-B
- lcd-knob
- lcd-cover

Step 2 — LCD preparation



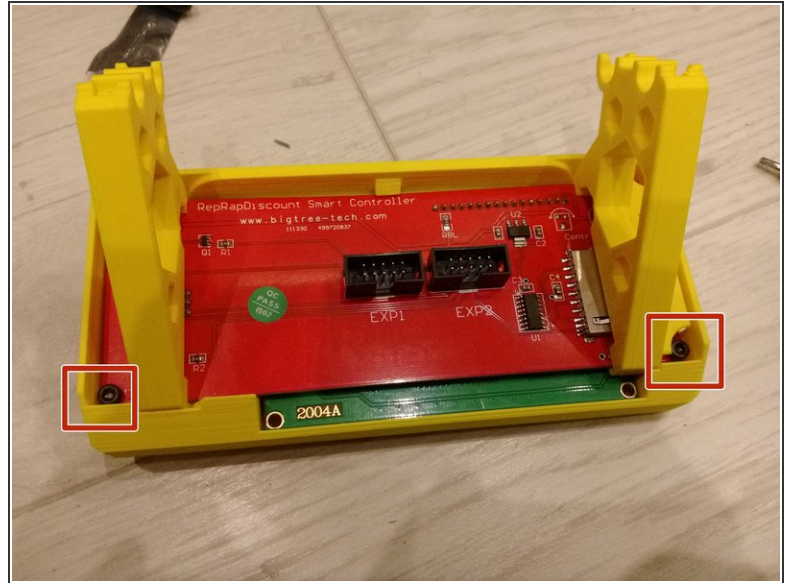
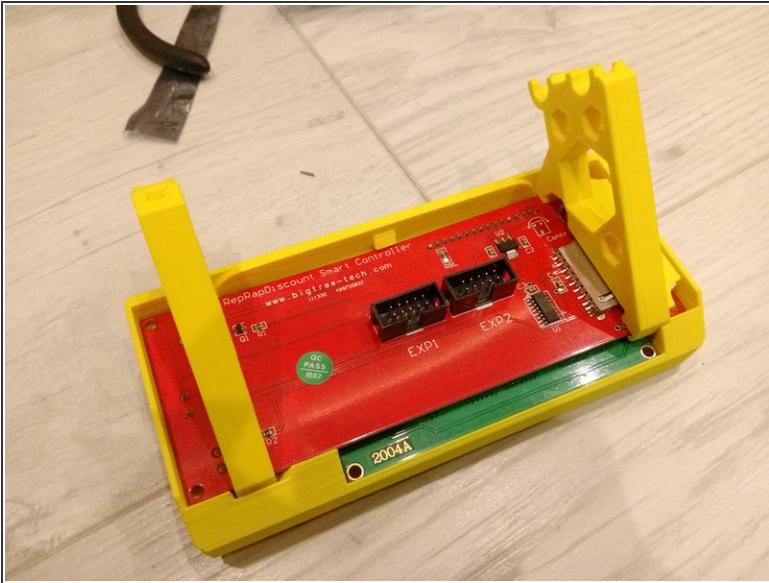
- Take the Reprap Discount Smart controller and remove the black knob (if its supplied with)
- Remove foil from the screen (not really necessary, if you really want - you can leave it)
- ① You can also remove the paper from buzzer, but as its very loud - I recommend to leave it to make the "biips" from printer quieter

Step 3 — Slide the lcd-supports on LCD



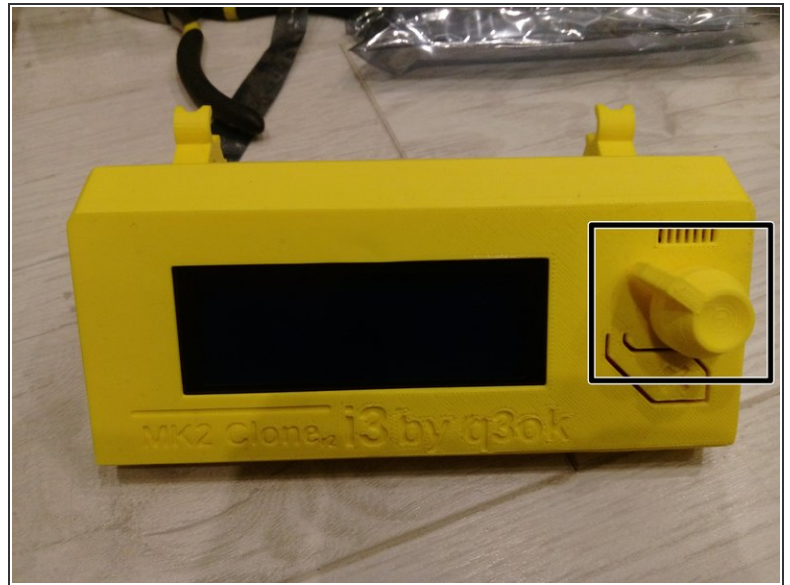
- Take the lcd support with the additional plate and slide it over sd card reader, be careful and do not destroy the potentiometer under it
- Take the second lcd support and slide it onto LCD, as shown on images

Step 4 — LCD cover



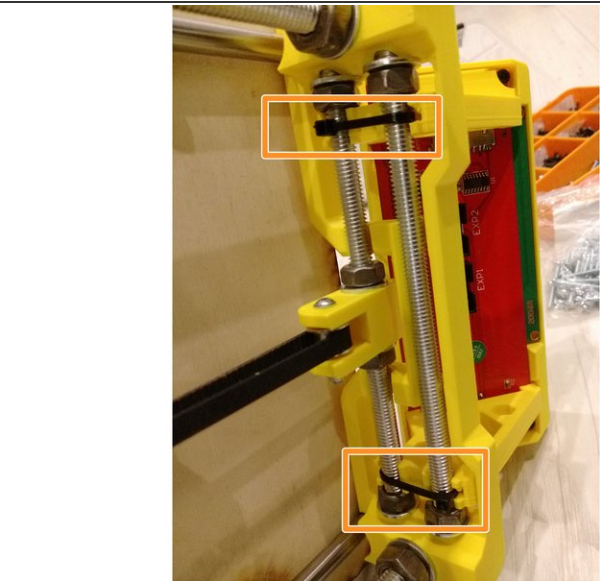
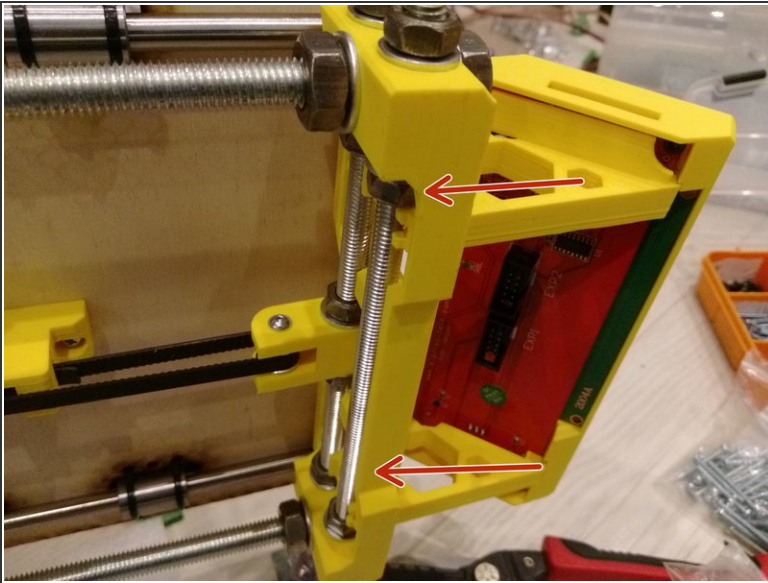
- Insert the LCD with supports into lcd-cover as shown on images
- Screw the LCD to the lcd-cover using two M3x10 screws

Step 5 — Lcd-knob



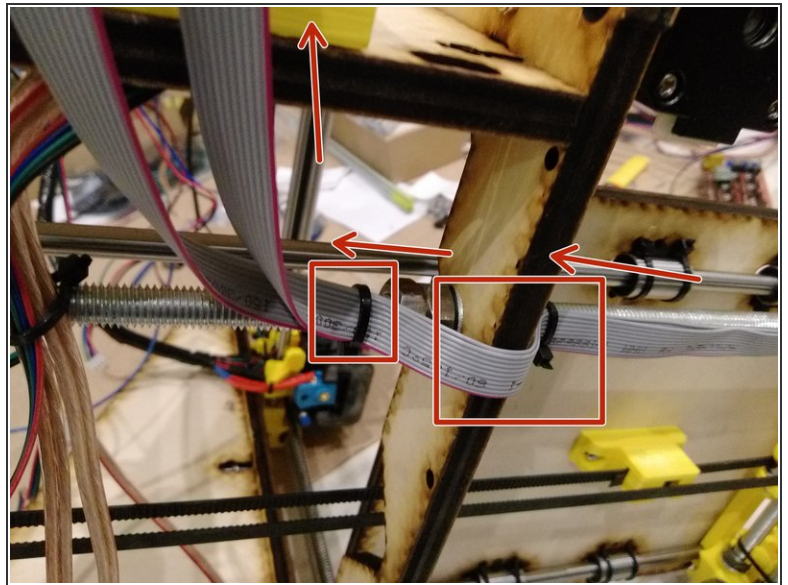
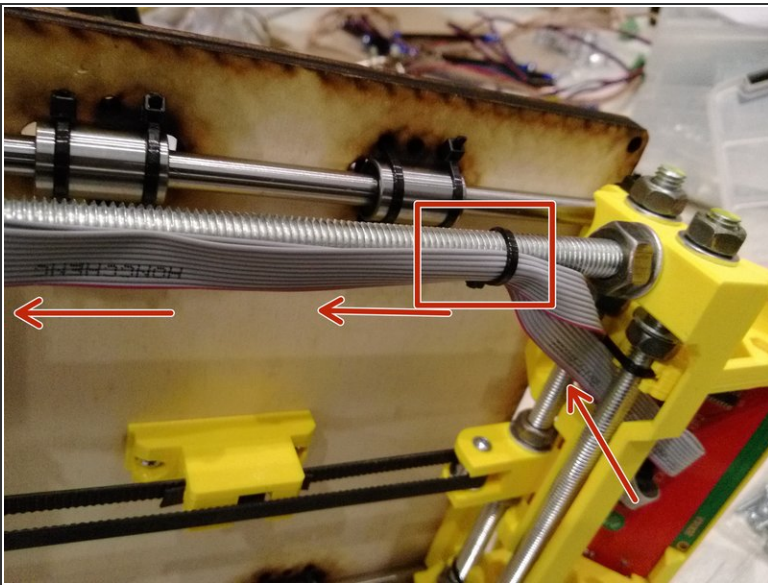
- Put the lcd-knob on the controller

Step 6 — LCD to frame assembly



- Insert the assembled LCD into front of the printer as shown on images
- Tighten the LCD using zipties

Step 7 — LCD cables



- Connect the LCD cables and guide them as shown on images

Step 8 — DONE



- The LCD assembly is done
- ⓘ Go now to next section, to [PSU assembly](#)